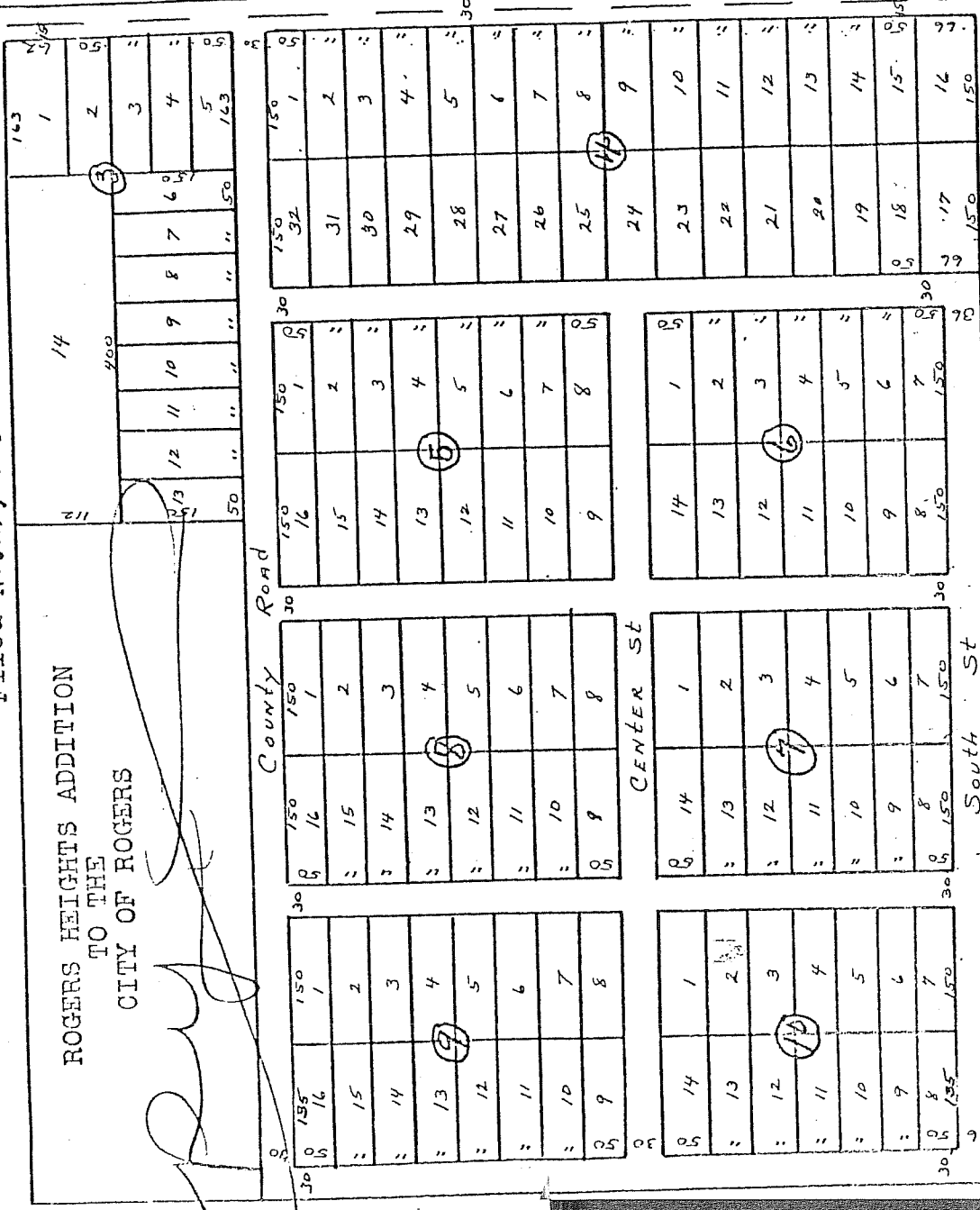


Sheet No. 18

Plat Record "A" Page 90
 Filed No. 19, 1945 Mary Chiles, Clerk

ROGERS HEIGHTS ADDITION
 TO THE
 CITY OF ROGERS



The above plat is a subdivision of Lots 3, 4, 5, 6, 7 and 11 of R. L. Hayes Subdivision of part of SW 1/4 Section 1 Twp. 19 N. Range 30 Recorded in Plat Book "A" Page 11

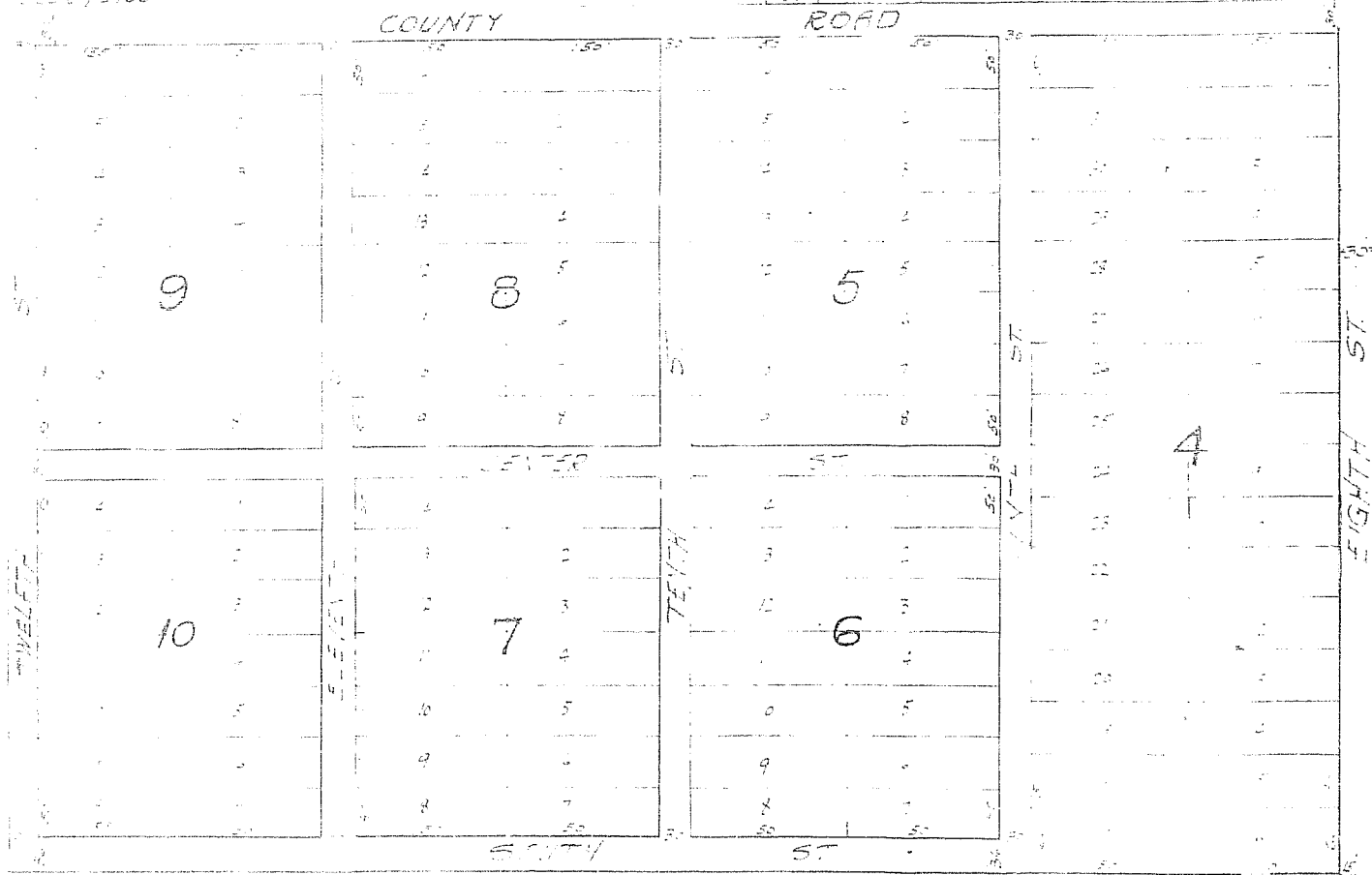
A-120

PLAT OF

ROGERS HEIGHTS

ADDITION TO THE
CITY OF ROGERS

Scale 1" = 100'



This plat is a subdivision of lots 3, 4, 5, 6, 7 and 8 of the C. L. Jones Subdivision of a portion of the SW 1/4 of Section 1, Twp 19 N, Range 30 W, Recorded in Plat Book "A" Page 11.

21 19 19 19