



100 80 60 40 20 0 50 100

PUTMAN FIRST ADDITION

A SUBDIVISION

A PART OF THE GARNER-LARIMORE AREA

BENTON COUNTY, ARKANSAS.

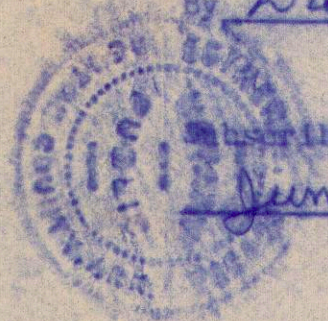
Located in part of the Northeast Quarter of the Southwest Quarter in Section 2 - Twp. 19N., Rg. 29W. in Benton County, Arkansas.

OWNERS CERTIFICATE AND DEDICATION

We the undersigned do hereby certify that we are the Sole Trustees of the above platted land and do hereby dedicate the streets and easements shown to the use of the public.

By Ray Harris Ray Harris, TRUSTEES.
By Darrow Garner Darrow Garner, TRUSTEES.

ACKNOWLEDGMENT



Subscribed and sworn to before me, a Notary Public, this 1 day of June 1964. My commission expires March 5-1965
Esther A. Spawta
Notary Public.

SURVEYORS CERTIFICATE

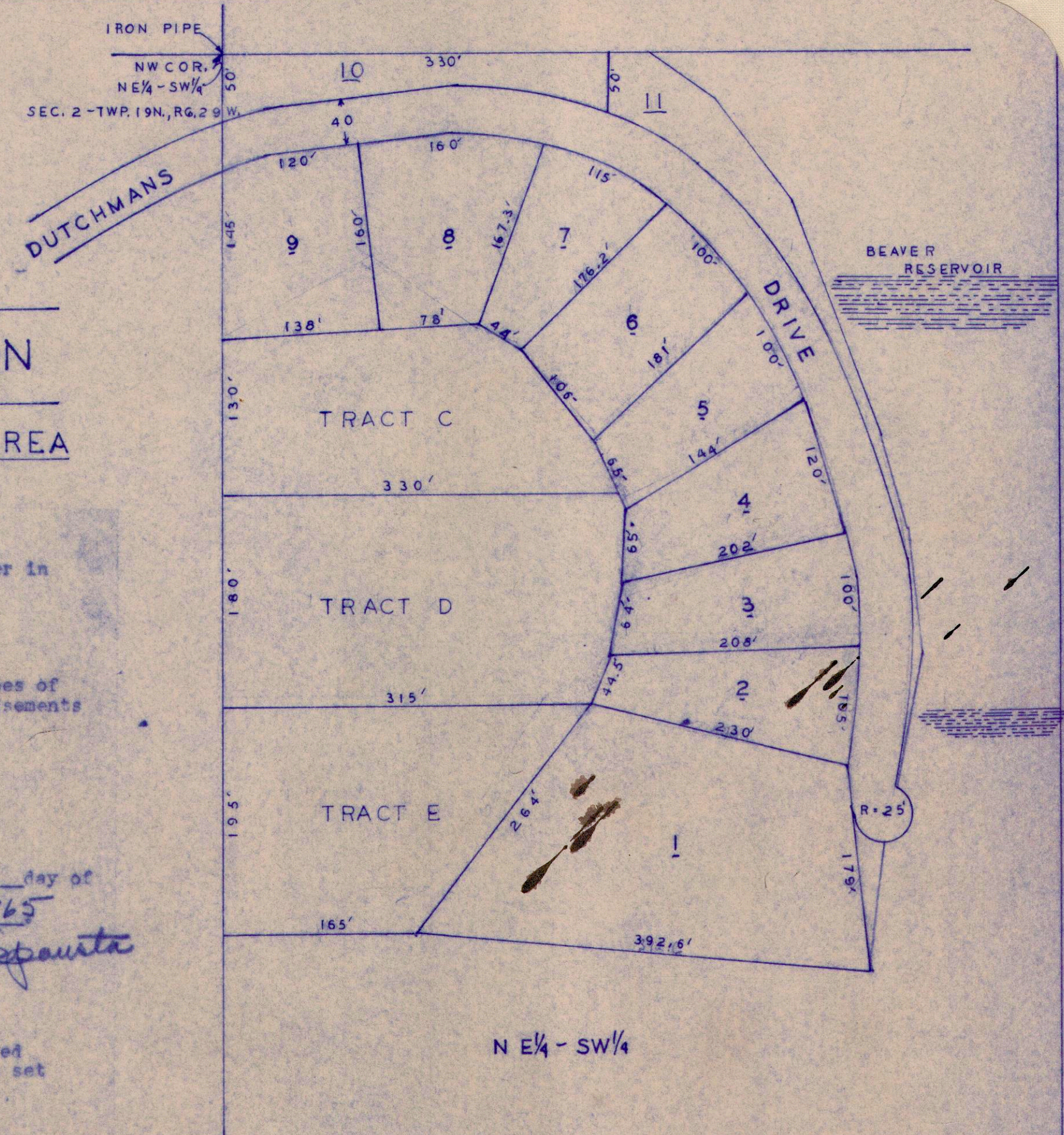
This is to certify that the above described land has been surveyed and that this Plat conforms to that survey. Iron Pins have been set at all lot corners.

Surveyed and Platted May 29, 1964.
Harold Painter
Benton County Surveyor.

APPROVAL

Approved and Accepted this 1st day of June 1964.
James H. Hays
Benton County Judge.

Filed for Record in Book _____, Page _____
Clerk.



N E 1/4 - SW 1/4

FILED FOR RECORD
At 1:45 O'clock P.M.

JUN 1 1964
JOSEPHINE R. HEYLAND
Clerk and Recorder
BENTON COUNTY, ARK.

For Revised Plat see Page 65
6-9-64 Josephine R. Heyland, Clerk
by Ruel T. Allen, D.E.

Book E.

E-65



100 80 60 40 20 0 50 100

- REVISED -

PUTMAN FIRST ADDITION

A SUBDIVISION

A PART OF THE GARNER-LARIMORE AREA

BENTON COUNTY, ARKANSAS.

LOCATION

Located in part of the Northeast Quarter of the Southwest Quarter in Section 2 - Twp. 19N., Rg. 29W. in Benton County, Arkansas.

OWNERS CERTIFICATE AND DEDICATION

We the undersigned do hereby certify that we are the Sole Trustees of the above platted land and do hereby dedicate the streets and easements shown to the use of the public.

By Ray Harris Ray Harris, TRUSTEES.
By Darrow Garner Darrow Garner, TRUSTEES.

ACKNOWLEDGMENT

Subscribed and sworn to before me, a Notary Public, this 1 day of June 1964. My commission expires March 5-1965

Esther A. Spawte
Notary Public.

SURVEYORS CERTIFICATE.

This is to certify that the above described land has been surveyed and that this Plat conforms to that survey. Iron Pins have been set at all lot corners.

Surveyed and Platted May 29, 1964.

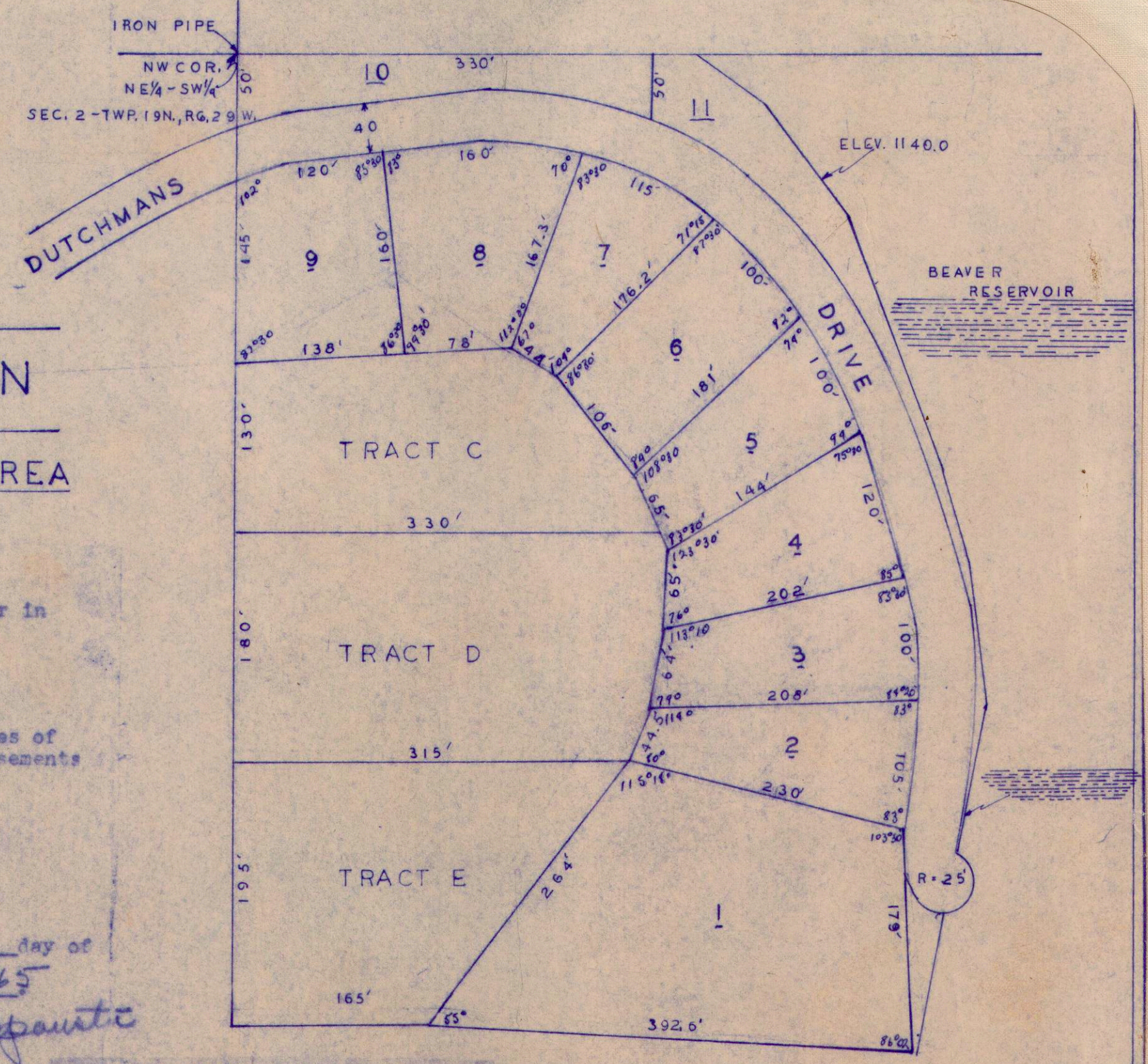
Harold Penister
Benton County Surveyor.

APPROVAL.

Approved and Accepted this 1 day of June 1964.
James R. King
Benton County Judge.

Filed for Record in Book E, Page 65.

Clerk.



** Note **

This Addition lies south and west of a meandering line which follows the 1140.0 Elevation contour line for Beaver Reservoir. Certified as being correct. REVISED 6-8-64 - Harold Penister

N E 1/4 - SW 1/4

FILED FOR RECORD
At 4:15 O'Clock P M.

JUN 9 1964
JOSEPHINE R. HEYLAND
Clerk and Recorder
BENTON COUNTY, ARK.

FILED FOR RECORD
At 1:45 O'Clock P M.

JUN 1 1964
JOSEPHINE R. HEYLAND
Clerk and Recorder
BENTON COUNTY, ARK.