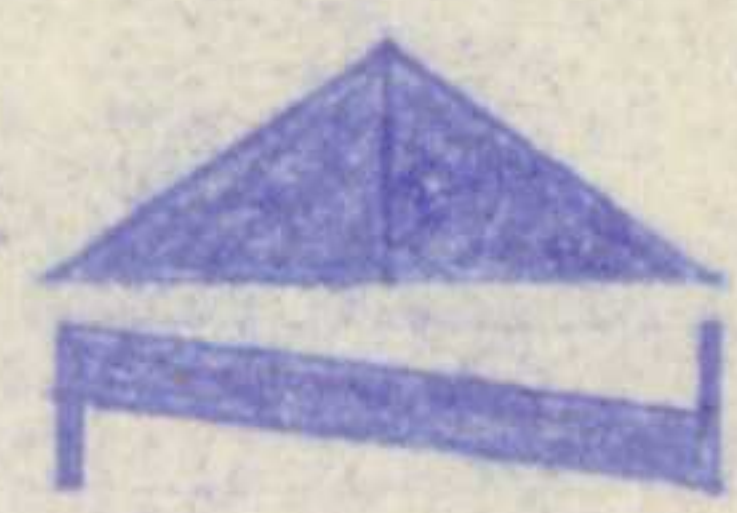


0-149

County Sub
Developer \$260⁰⁰ per ac



1" = 200'
• Set I.P.

R6.3
West

R6.30
West

FILED FOR RECORD

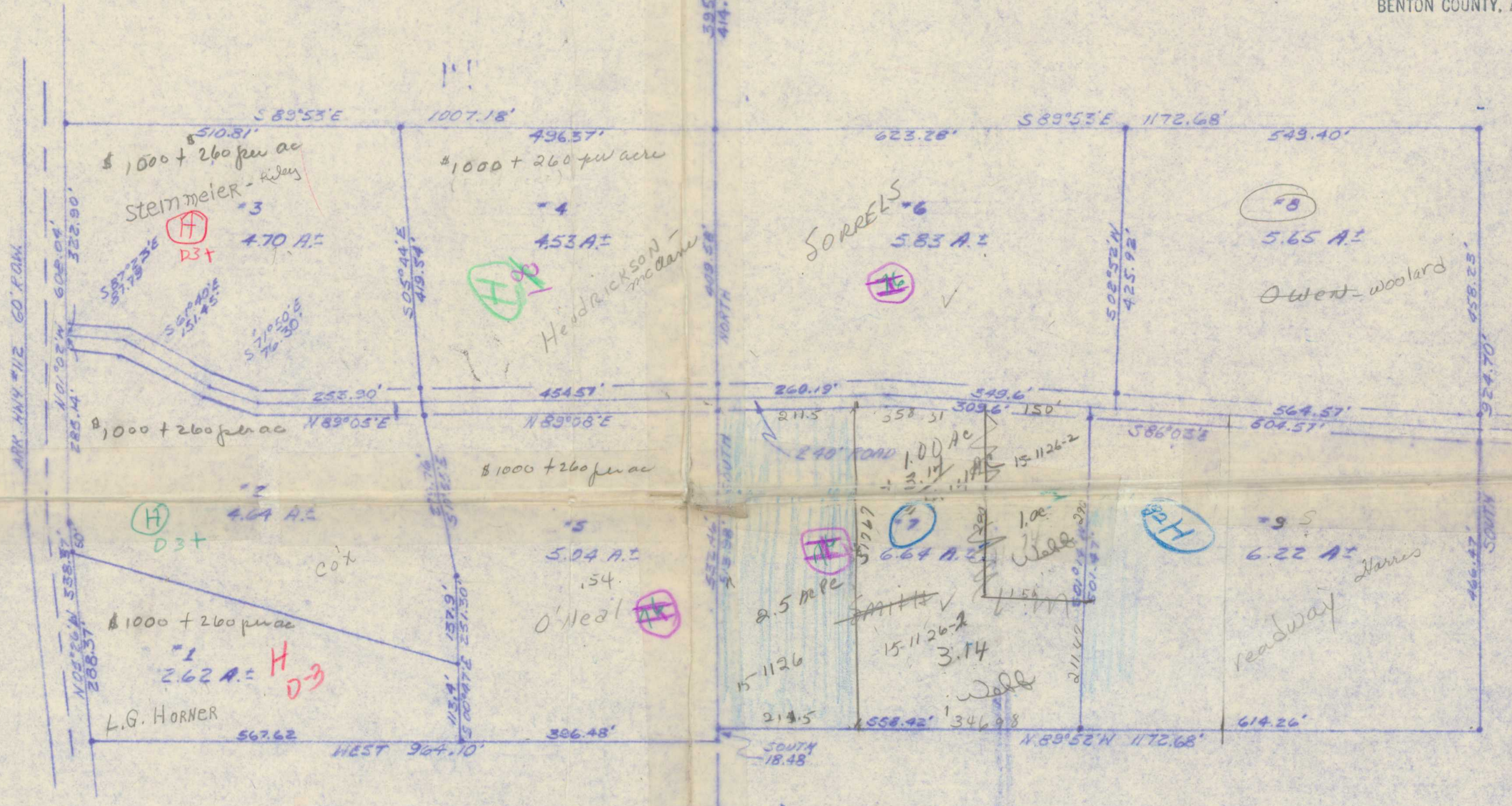
At 9:30 O'Clock A M.

JUL 25 1973

JOSEPHINE R. FEYLAND
Clerk and Recorder
BENTON COUNTY, ARK.

NE 1/4 NE 1/4 Sec. 24, TWP. 19 N.

FRL. NW 1/4 Sec. 19, TWP. 19 N.



OZARK

ACRES

Route 2

Bentonville, Arkansas

LOCATION

Located in part of the E 1/2 of the NE 1/4 of Section 24, Township 19 North, Range 31 West and in part of the Fractional NW 1/4 of Section 19, Township 19 North, Range 30 West all in Benton County, Arkansas.

DESCRIPTION

Beginning 395.12 feet South of the NW corner of the Fractional NW 1/4 of Section 19, Township 19 North, Range 30 West in Benton County, Arkansas; thence S 89°53'E 1172.68 feet; thence South 924.70 feet; thence N 89°52'W 1172.68 feet; thence South 18.48 feet; thence West 964.20 feet; thence N 05°26'W 338.37 feet; thence N 01°02'W 608.04 feet; thence S 89°53'E 1007.18 feet to the point of beginning containing 45.87 acres more or less.

CERTIFICATION

This is to certify that the above described property has been surveyed and that this plat conforms to that survey.

PREPARED BY
SHIELDS & PACE, Inc.
BENTONVILLE, ARKANSAS

THOMAS E. PAGE
ARKANSAS REGISTERED
LAND SURVEYOR
NO. 572



SIGNATURE

Revised