

NUMBER	SOUTH EASEL	CHORD DIVISION	WALKS	ARC LENGTH	CHORD LENGTH
21	6' 0" x 24' 0" #	15.80	12.88	17.27	17.27
22	6' 0" x 24' 0" #	6.82	23.89	12.27	12.27
23	6' 0" x 24' 0" #	17.80	14.86	17.89	17.89
24	6' 0" x 24' 0" #	10.20	16.14	16.48	16.48
25	6' 0" x 24' 0" #	10.20	16.14	16.58	16.58
26	6' 0" x 24' 0" #	18.20	15.80	17.89	17.89
27	6' 0" x 24' 0" #	18.20	16.40	17.19	17.19
28	6' 0" x 24' 0" #	18.20	16.40	17.19	17.19
29	6' 0" x 24' 0" #	18.20	16.40	17.19	17.19
30	6' 0" x 24' 0" #	18.20	16.40	17.19	17.19
31	6' 0" x 24' 0" #	18.20	16.40	17.19	17.19
32	6' 0" x 24' 0" #	18.20	16.40	17.19	17.19
33	6' 0" x 24' 0" #	18.20	16.40	17.19	17.19
34	6' 0" x 24' 0" #	18.20	16.40	17.19	17.19
35	6' 0" x 24' 0" #	18.20	16.40	17.19	17.19
36	6' 0" x 24' 0" #	18.20	16.40	17.19	17.19
37	6' 0" x 24' 0" #	18.20	16.40	17.19	17.19
38	6' 0" x 24' 0" #	18.20	16.40	17.19	17.19
39	6' 0" x 24' 0" #	18.20	16.40	17.19	17.19
40	6' 0" x 24' 0" #	18.20	16.40	17.19	17.19
41	6' 0" x 24' 0" #	18.20	16.40	17.19	17.19
42	6' 0" x 24' 0" #	18.20	16.40	17.19	17.19
43	6' 0" x 24' 0" #	18.20	16.40	17.19	17.19
44	6' 0" x 24' 0" #	18.20	16.40	17.19	17.19
45	6' 0" x 24' 0" #	18.20	16.40	17.19	17.19
46	6' 0" x 24' 0" #	18.20	16.40	17.19	17.19
47	6' 0" x 24' 0" #	18.20	16.40	17.19	17.19
48	6' 0" x 24' 0" #	18.20	16.40	17.19	17.19
49	6' 0" x 24' 0" #	18.20	16.40	17.19	17.19
50	6' 0" x 24' 0" #	18.20	16.40	17.19	17.19
51	6' 0" x 24' 0" #	18.20	16.40	17.19	17.19
52	6' 0" x 24' 0" #	18.20	16.40	17.19	17.19
53	6' 0" x 24' 0" #	18.20	16.40	17.19	17.19
54	6' 0" x 24' 0" #	18.20	16.40	17.19	17.19
55	6' 0" x 24' 0" #	18.20	16.40	17.19	17.19
56	6' 0" x 24' 0" #	18.20	16.40	17.19	17.19
57	6' 0" x 24' 0" #	18.20	16.40	17.19	17.19
58	6' 0" x 24' 0" #	18.20	16.40	17.19	17.19
59	6' 0" x 24' 0" #	18.20	16.40	17.19	17.19
60	6' 0" x 24' 0" #	18.20	16.40	17.19	17.19
61	6' 0" x 24' 0" #	18.20	16.40	17.19	17.19
62	6' 0" x 24' 0" #	18.20	16.40	17.19	17.19
63	6' 0" x 24' 0" #	18.20	16.40	17.19	17.19
64	6' 0" x 24' 0" #	18.20	16.40	17.19	17.19
65	6' 0" x 24' 0" #	18.20	16.40	17.19	17.19
66	6' 0" x 24' 0" #	18.20	16.40	17.19	17.19
67	6' 0" x 24' 0" #	18.20	16.40	17.19	17.19
68	6' 0" x 24' 0" #	18.20	16.40	17.19	17.19
69	6' 0" x 24' 0" #	18.20	16.40	17.19	17.19
70	6' 0" x 24' 0" #	18.20	16.40	17.19	17.19
71	6' 0" x 24' 0" #	18.20	16.40	17.19	17.19
72	6' 0" x 24' 0" #	18.20	16.40	17.19	17.19
73	6' 0" x 24' 0" #	18.20	16.40	17.19	17.19
74	6' 0" x 24' 0" #	18.20	16.40	17.19	17.19
75	6' 0" x 24' 0" #	18.20	16.40	17.19	17.19
76	6' 0" x 24' 0" #	18.20	16.40	17.19	17.19
77	6' 0" x 24' 0" #	18.20	16.40	17.19	17.19
78	6' 0" x 24' 0" #	18.20	16.40	17.19	17.19
79	6' 0" x 24' 0" #	18.20	16.40	17.19	17.19
80	6' 0" x 24' 0" #	18.20	16.40	17.19	17.19
81	6' 0" x 24' 0" #	18.20	16.40	17.19	17.19
82	6' 0" x 24' 0" #	18.20	16.40	17.19	17.19
83	6' 0" x 24' 0" #	18.20	16.40	17.19	17.19
84	6' 0" x 24' 0" #	18.20	16.40	17.19	17.19
85	6' 0" x 24' 0" #	18.20	16.40	17.19	17.19
86	6' 0" x 24' 0" #	18.20	16.40	17.19	17.19
87	6' 0" x 24' 0" #	18.20	16.40	17.19	17.19
88	6' 0" x 24' 0" #	18.20	16.40	17.19	17.19
89	6' 0" x 24' 0" #	18.20	16.40	17.19	17.19
90	6' 0" x 24' 0" #	18.20	16.40	17.19	17.19
91	6' 0" x 24' 0" #	18.20	16.40	17.19	17.19
92	6' 0" x 24' 0" #	18.20	16.40	17.19	17.19
93	6' 0" x 24' 0" #	18.20	16.40	17.19	17.19
94	6' 0" x 24' 0" #	18.20	16.40	17.19	17.19
95	6' 0" x 24' 0" #	18.20	16.40	17.19	17.19
96	6' 0" x 24' 0" #	18.20	16.40	17.19	17.19
97	6' 0" x 24' 0" #	18.20	16.40	17.19	17.19
98	6' 0" x 24' 0" #	18.20	16.40	17.19	17.19
99	6' 0" x 24' 0" #	18.20	16.40	17.19	17.19
100	6' 0" x 24' 0" #	18.20	16.40	17.19	17.19

STREET KEY					
BUILDING	STREET NAME	RIGHT-OF-WAY	STREET WIDTH	SEWERAL	GREEN SPACE
4"	ROD STREET	50'	30' 0-0'	4"	3'
4"	CASTLE STREET	50'	30' 0-0'	4"	3'
4"	CHERRYWOOD STREET	50'	30' 0-0'	4"	3'
4"	SPRING STREET	50'	30' 0-0'	4"	3'
4"	HOUQUAY STREET	50'	30' 0-0'	4"	3'
4"	WINDY HILL STREET	50'	30' 0-0'	4"	3'
4"	RODING STREET	50'	30' 0-0'	4"	3'
4"	CONCRETE STREET	50'	30' 0-0'	4"	3'

NUMBER	DIVISION	OFFSHOOT
11	W. 24' x 24' 0" #	15.80
12	W. 24' x 24' 0" #	15.80
13	W. 24' x 24' 0" #	15.80
14	W. 24' x 24' 0" #	15.80

CERTIFICATE OF CORRECT

BE THE PROFESSIONAL ENGINEER IN CHARGE OF THE PEA RIDGE DESIGN AND CONSTRUCTION OF THE PEA RIDGE SUBDIVISION AND ALL OTHER CONDITIONS AND APPROVALS HAVING BEEN COMPLETED, THIS DOCUMENT IS HEREBY ACCEPTED. THIS CERTIFICATE OF CORRECT EXCLUDES THE ADEQUACY OF EACH ROAD AND RECOLLECTOR. DATE OF CORRECT: 12/28/2014

CERTIFICATE OF FINAL PLAT APPROVAL

FURNISHED TO THE PEA RIDGE SUBDIVISION REGULATIONS AND ALL OTHER CONDITIONS AND APPROVALS HAVING BEEN COMPLETED, THIS DOCUMENT IS HEREBY ACCEPTED. THIS CERTIFICATE OF CORRECT EXCLUDES THE ADEQUACY OF EACH ROAD AND RECOLLECTOR. DATE OF FINAL PLAT APPROVAL: 12/28/2014

DESIGNER'S AFFIDAVIT

I, the undersigned, being duly sworn, depose and say that the plat correctly represents a survey made by me and my assistants and that the same is a true and correct representation of the actual survey. My commission expires on 12/28/2014. DATE OF AFFIDAVIT: 12/28/2014



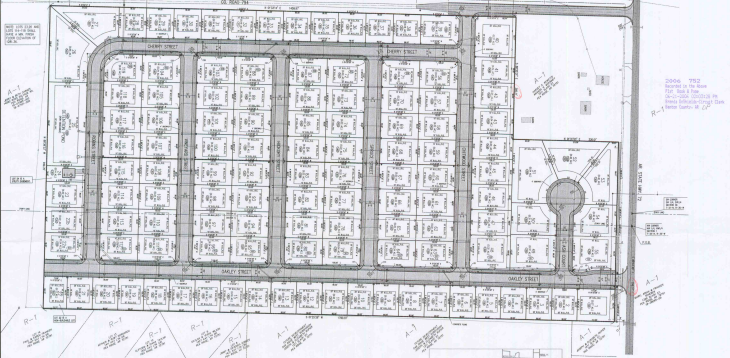
Plan title block for "FINAL PLAT FOR MAPLE GLENN SUBDIVISION, PEAS RISE, ARKANSAS". Includes fields for subdivision name, owner (Southwest Partners, LLC), address, engineer name (G. Bates), and date (06/08/08).

Legend table with columns: PROPOSED, EXISTING, DESCRIPTION. Lists symbols for various infrastructure elements like sidewalks, curbs, electrical conduits, fire hydrants, etc.

Notes and remarks section containing specific details and measurements for the subdivision, including references to other sheets and survey data.

2006 751
Approved by the State
Plat Book # 100
10/11/2008 10:10:00 AM
www.southwestpartners.com
Brian Carter, P.E.

5000 SALVAGE DR
OR ROAD 751



2006 752
Revised to the South
Flat, Rock & Pine
1/24/06 - 2006 1533123123123123
James H. Bates & Associates, Inc.
James H. Bates & Associates, Inc.
James H. Bates & Associates, Inc.

VERSION	DATE	REVISION FOR CITY OF PEA RIDGE COMMENTS
REVISIONS		
FINAL PLAN FOR MAPLE GLENN SUBDIVISION PEA RIDGE, ARKANSAS Prepared For SOUTHWEST PARTNERS, LLC 9869 SOUTHWEST DRIVE ROGERS, ARKANSAS 72756		
DRAWN BY: GRAVEN CHECKED BY: G. BATES DATE: 05/08/08 SHEET NO.: 1 OF 2 PROJECT NO.: 04022-00		



MINIMUM SETBACK REQUIREMENTS
FRONT 10' 0"
SIDE 5' 0"
REAR 10' 0"

BASE OF SETBACKS: GRASSED DRIVE FLARE AND SIDE

BASE OF SETBACKS: 40' SIDE SETBACK MEASURED IN THE 90° DIRECTION FROM THE SIDE OF ROAD OR



VICINITY MAP
N.T.S.