

COUNTY ROAD

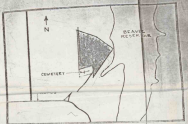
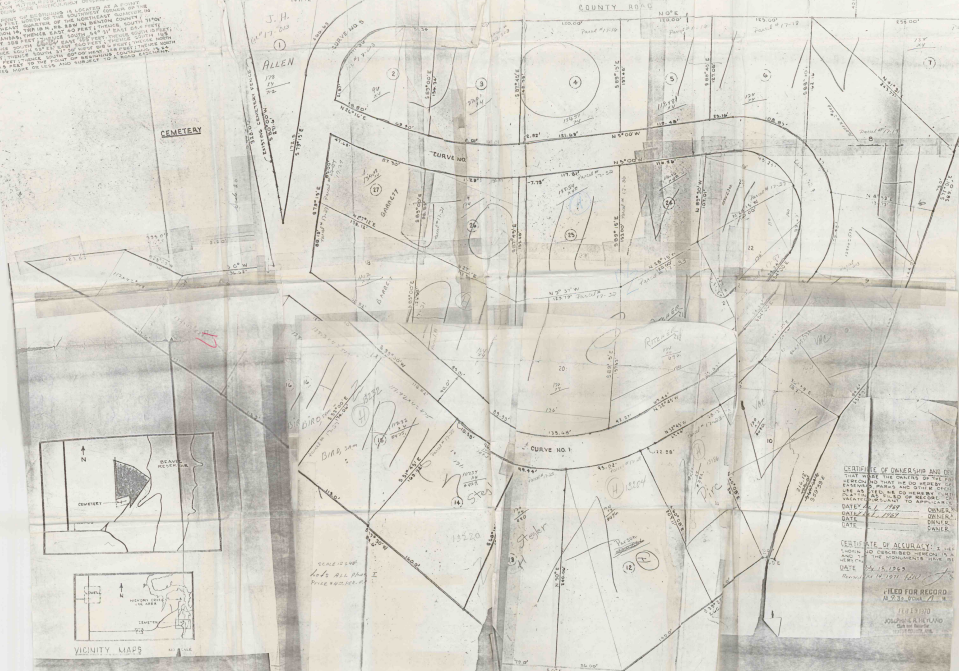
THE POINT WHERE THIS ROAD IS LOCATED AT A CORNER OF SECTION 20, T. 10 N., R. 14 E., S. 14 S. IS IN THE NE 1/4 OF SECTION 20, T. 10 N., R. 14 E., S. 14 S. AS SHOWN ON THE PLAT OF THE WESTERN PACIFIC RAILROAD AND THE PLAT OF THE ALIEN TRACT, BOTH OF WHICH ARE ON FILE IN THE OFFICE OF THE COUNTY CLERK OF THIS COUNTY.

J.H.
177
210

ALLEN
177
210

CEMETERY

WESTERN PACIFIC RAILROAD
2175
2176
2177
2178
2179



VICINITY MAPS

GENE CAMP
Lots All One I
Price \$100.00

CERTIFICATE OF RANGES AND LOTS
 THAT WHERE THE CURVES IN THIS PLAT
 ARE SHOWN TO BE CORRECT AND THAT HE HAS BEEN
 BY THE PLAT OF THE WESTERN PACIFIC
 RAILROAD AND THE PLAT OF THE ALIEN TRACT
 BOTH OF WHICH ARE ON FILE IN THE OFFICE OF THE
 COUNTY CLERK OF THIS COUNTY.

DATE	OWNER
1887	GENE CAMP
1888	GENE CAMP
1889	GENE CAMP

CERTIFICATE OF ACCURACY
 THAT THE CURVES IN THIS PLAT
 ARE CORRECT AND THAT HE HAS BEEN
 BY THE PLAT OF THE WESTERN PACIFIC
 RAILROAD AND THE PLAT OF THE ALIEN TRACT
 BOTH OF WHICH ARE ON FILE IN THE OFFICE OF THE
 COUNTY CLERK OF THIS COUNTY.

DATE 1888
 NAME J. H. CAMP
 TITLE COUNTY CLERK

FILED FOR RECORD

1888

ALLEN & HENNING

Surveyors